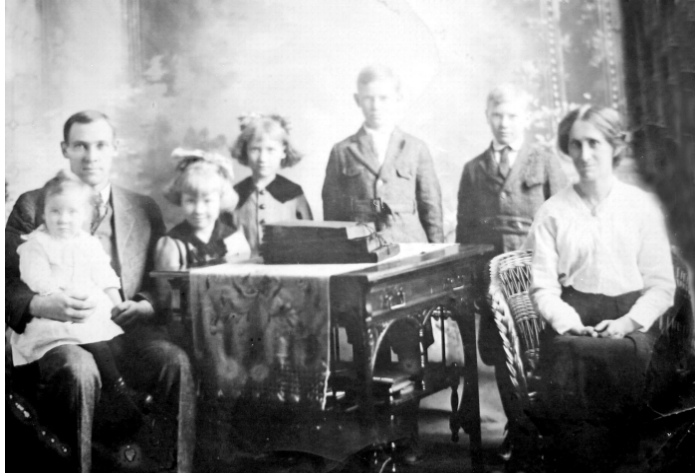


IX. OBED EDOM MAXSON 1884 - 1951

(Mary Melissa, Charles H., Philip Jr., Philip Sr., John Sr., Peter I, Peter Gerardus, Jean)



Obed with Harriet Beulah, Adeline, Frances, Gordon, Floyd, and Harriet c. 1917



From the flag on the front, it is a good bet that Obed had decked out this car to advertise his business for a July 4th Parade.

Mary and Almond's son Obed Edom was born July 24, 1884 in Bingham Twp., Huron Co., MI per record #399. As a young man he was a wheat thresher and followed the wheat harvest. That may be what led him to Elgin, Manitoba. While there, he met and was married to Harriet Dann by Presbyterian minister, James Pryde on Jan. 16, 1907. Her parents had a large farm in the area. After their marriage, they came to Michigan for a short time where their first son Gordon J. was born Jan. 24, 1908. Their next two children were born in Manitoba: Floyd G. on Feb. 4, 1909 and Frances A. on Oct. 4, 1911. Then on March 24, 1913, a *Manifest of Alien Passengers Applying for Admission* shows Obed E., Harriet, Gordon, Floyd, and Audrey (Frances) arriving in the United States at Portal, ND. They had been living in Elgin, Manitoba and were headed for Romeo, MI where his parents lived. They gave Harriet's father, John Dann of Elgin as the nearest relative in Canada. Later that year, daughter Adeline Florence was born on Oct. 20, 1913 followed by Harriet Beulah in 1916. The youngest son, Obed E. (Bud) was born Dec. 8, 1924.

On Sept. 12, 1918, Obed was registered for the draft showing that he was self-employed in vulcanizing. The registrar's report C21-2-5 showed he was of medium build and height with blue eyes and brown hair. Fortunately WWI was almost over so he didn't need to serve. The 1920 census for Macomb Co., Village of Romeo shows Obed as a keeper of a tire repair shop. Then the 1930 census for Macomb Co., City of Mt. Clemens shows him as an owner of a tire repair shop with sons Gordon and Floyd working for him. The 1932 Mt. Clemens directory has him listed as the owner of Maxson Battery Company but by 1933 the Great Depression had caused him to lose his business. He then became a Watkins salesman for a number of years spending his final years as a carpenter.

Obed and Harriet separated in the late 1930s but never divorced. She went to work for General Motors Truck and Coach Division in Pontiac, MI, retiring in 1953 after fifteen years of service. She died March 6, 1968 and is buried in the Romeo Cemetery. Obed died of a cerebral hemorrhage at Pontiac General Hospital on Aug. 19, 1951. He is also buried in the Romeo Cemetery.

Eldest son Gordon had attended Michigan Technological University and was an engineer for Western Electric after WWII. He was living in Lemont, IL when he died in March 1974. Floyd had also attended MTU. He died April 1964 in Huntsville, AL. Frances married Clayton T. Alexander. She worked in the Treasurer's Dept. for the City of Port Huron, MI from 1961 until retirement in 1978. She died Aug. 15, 2005. Her obituary says "Her brothers, sister, and her sons served their country during WWII and the Korean War". That sister would be Adeline Florence pictured in her Wave uniform. Adeline married Carl Grossmann. She died Sept. 7, 1997 at Oxford, MI. Obed and Harriet's youngest daughter, Harriet Beulah married George Trudeau. She died in 1987 at Oxford, MI. And the youngest son Obed (Bud) died October 1972.

